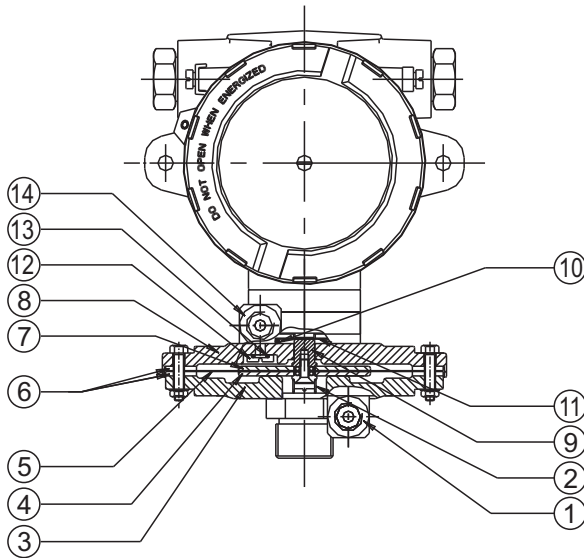




FE



PRESSURE CAPSULE DETAILS



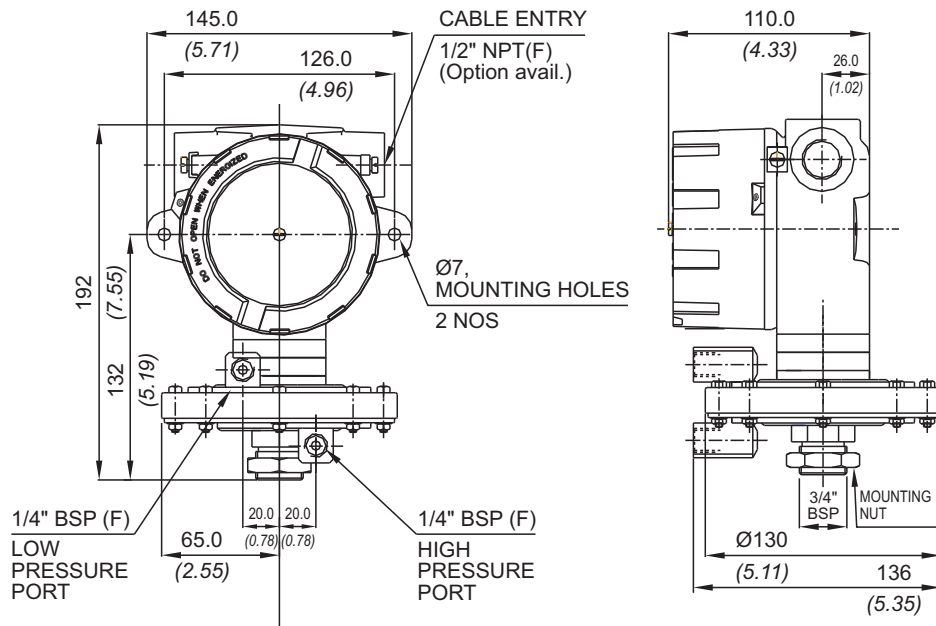
No. Description

1. High pressure port (S.S.)*
2. Support spring (S.S.)
3. Bottom flange (S.S.)*
4. Support plate (S.S.)
5. Diaphragm (Neoprene)
6. Gasket (Nitrile)
7. Top plate (S.S.)
8. Top flange (S.S.)*
9. Transfer pin (S.S.)
10. 'O' ring (Nitrile)
11. Sealing diaphragm (Nitrile)
12. Top flange screw (S.S.)
13. Sealing 'O' ring (Nitrile)
14. Low pressure port (S.S.)*

Note : *wetted parts* are mentioned in italics.

*Pressure ports are welded with flange

INSTALLATION DRAWING



APPROX. DIMENSIONS IN $\frac{\text{mm}}{\text{inches}}$

RANGE SELECTION TABLE

Range Code	Range mbar ("wc)	Differential* mbar (" wc)	Maximum Working Pressure bar (psi)
		Approximate Maximum for "A1" microswitch	
N02	1.5 - 15 (0.602 - 6.02)	3 (1.204)	20 (290.076)
N03	5 - 25 (2.007 - 10.037)	5 (2.007)	20 (290.076)
N05	10 - 50 (4.015 - 20.073)	5 (2.007)	20 (290.076)
N10	10 - 100 (4.015 - 40.146)	10 (4.015)	20 (290.076)
N15	10 - 150 (4.015 - 60.22)	10 (4.015)	20 (290.076)
N25	20 - 250 (8.03 - 100.36)	15 (4.015)	20 (290.076)
N35	50 - 350 (20.073 - 140.51)	35 (14.05)	20 (290.076)

*Minimum differential increases with setpoint (Graphs available on request)

Microswitches A2 through A9 can be supplied in some ranges and differentials will vary with microswitch used. Please contact sales office for details. Please check availability of adjustable differential with sales office.

Note : Ranges are quoted for rising set point unless specified otherwise.

All ranges can start from 0 mbar to FSR for falling set point.

LOW DP HIGH PROOF PRESSURE DIFFERENCE SWITCHES



HOW TO ORDER FLAMEPROOF LOW DP HIGH PROOF PRESSURE DIFFERENCE SWITCHES

Group 1	Group 2	Group 3	Group 4	Group 5	Group 6	Group 7	Group 8
Non standard allocation	Model	Cable Entry Size	Switch Type	Range Code (values in mbar)	Microswitch Type	Pressure Port Material / Size	Diaphragm
<input type="checkbox"/> Reserved for non-standard options not covered in catalogue. Will be given by manufacturer, only after agreement of supply details with customer.	FE = IP66 Flameproof pressure switch, PESO approved	1 = Al. head ½" NPT threads 2 = Al. head ¾" NPT threads 3 = Al. head M20 x 1.5 threads 4 = Grey Cl head ½" NPT threads 5 = Grey Cl head ¾" NPT threads 6 = Grey Cl head M20 x 1.5 threads 7 = SS head ½" NPT threads 8 = SS head ¾" NPT threads 9 = SS head M20 x 1.5 threads * Not available in FE models	D1 = pressure difference switch, fixed differential without scale D2 = pressure difference switch, fixed differential with scale in mbar D3 = pressure difference switch, fixed differential with scale in "wc	N02 = (1.5 - 15) N03 = (5 - 25) N05 = (10 - 50) N10 = (10 - 100) N15 = (10 - 150) N25 = (20 - 250) N35 = (50 - 350)	A1 = General purpose microswitch rated at 15 A; 250 VAC A2 = Hermetically sealed for corrosive environments A3 = gold plated contacts for low voltage applications A5 = for high DC ratings A6 = elements with adjustable deadband A7 = 2SPDT switching elements A8 = General purpose microswitch rated at 5 A, 250 VAC; 5 A, 28 VDC A9 = General purpose microswitch rated at 5 A; 250 VAC	S1 = SS316 / ¼" BSP(F) S2 = SS316 / ¼" NPT(F) Please refer Page No. 110 for Pressure Port options	0 = Neoprene 1 = PTFE
Please refer Page No. 116 for Microswitch options * Please refer note under Range Selection Table						For additional wetted parts please contact Sales Office	

eg. A flameproof switch for gas group IIC, with ½" NPT cable entry in aluminium housing as 1SPDT pressure switch, having 0.1 bar to 1 bar pressure range, with 15Amp. microswitch, SS316 pressure housing with ¼" BSP port size & neoprene diaphragm shall be specified by

Group 1	Group 2	Group 3	Group 4	Group 5	Group 6	Group 7	Group 8
<input type="checkbox"/>	FE	1	D1	N03	A1	S1	0

Please specify full model number to avoid ambiguity. If only the first two groups are specified while ordering, uncalibrated switches with standard wetted parts and enclosures will be supplied.