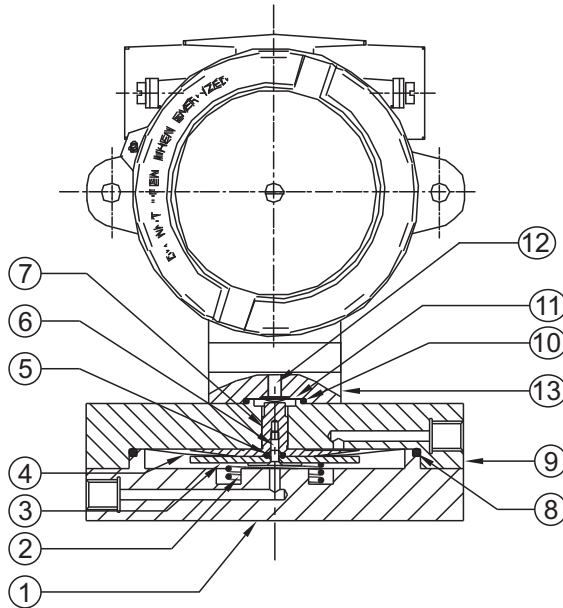




# FE



## PRESSURE CAPSULE DETAILS

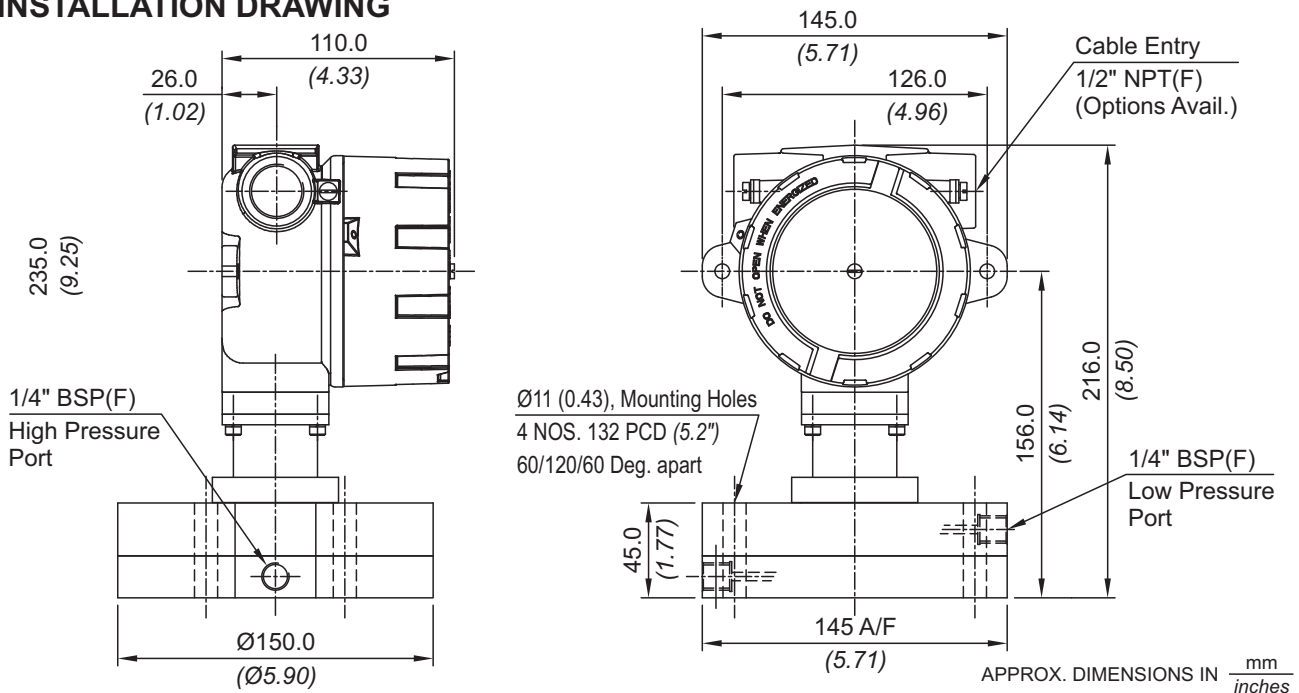


### No. Description

1. High Pressure Housing
2. Spring
3. H P Plunger
4. Diaphragm
5. Plunger 'O' ring
6. Plunger Screw
7. L P Plunger
8. Main Sealing 'O' ring
9. Low Pressure Housing
10. Sealing 'O' ring
11. Diaphragm
12. Small Plunger

Note : *wetted parts* are mentioned in italics.

## INSTALLATION DRAWING



## RANGE SELECTION TABLE

Range Code	Range mbar ("wc)	Differential* mbar ("wc)	Maximum Working Pressure bar (psi)
		Approximate Maximum for "A1" microswitch	
M03	5 - 25 (2.007 - 10.037)	5 (2.007)	100 (1450.38)
M05	10 - 50 (4.015 - 20.073)	5 (2.007)	100 (1450.38)
M10	10 - 100 (4.015 - 40.150)	10 (4.015)	100 (1450.38)
M15	10 - 150 (4.015 - 60.22)	10 (4.015)	100 (1450.38)
M25	20 - 250 (8.029 - 100.366)	15 (6.022)	100 (1450.38)
M35	50 - 350 (20.073 - 140.52)	35 (14.05)	110 (1595.00)

\*Minimum differential increases with setpoint, values with neoprene diaphragm (Graphs available on request)

\* Differentials of microswitches A2 through A9 will vary. Differentials for A7 are typically twice that for A1 microswitch. Please indicate specifically the differential value in enquiry/order, when it is critical in your application.

Note : Ranges are quoted for rising set point unless specified otherwise.

All ranges can start from 0 mbar to FSR for falling set point.

# HOW TO ORDER FLAMEPROOF LOW ΔP HIGH PROOF RANGE PRESSURE DIFFERENCE SWITCHES

## LOW ΔP HIGH PROOF PRESSURE DIFFERENCE SWITCHES



Group 1	Group 2	Group 3	Group 4	Group 5	Group 6	Group 7	Group 8
Non standard allocation  <input type="checkbox"/> Reserved for non-standard options not covered in catalogue. Will be given by manufacturer, only after agreement of supply details with customer.	Model  <b>FE =</b> IP66 Flameproof pressure switch, PESO approved	Cable Entry Size  <b>1</b> = Al. head 1/2" NPT threads <b>2</b> = Al. head 3/4" NPT threads <b>3</b> = Al. head M20 x 1.5 threads <b>*4</b> = Grey Cl head 1/2" NPT threads <b>*5</b> = Grey Cl head 3/4" NPT threads <b>*6</b> = Grey Cl head M20 x 1.5 threads <b>*7</b> = SS head 1/2" NPT threads <b>*8</b> = SS head 3/4" NPT threads <b>*9</b> = SS head M20 x 1.5 threads  * Not available in FE models	Switch Type  <b>D1 =</b> pressure difference switch, fixed differential without scale <b>D2 =</b> pressure difference switch, fixed differential with scale in mbar <b>D3 =</b> pressure difference switch, fixed differential with scale in "wc	Range Code (values in mbar)  <b>M03 =</b> (5 - 25) <b>M05 =</b> (10 - 50) <b>M10 =</b> (10 - 100) <b>M15 =</b> (10 - 150) <b>M25 =</b> (20 - 250) <b>M35 =</b> (50 - 350)	Microswitch Type  <b>A1 =</b> General purpose microswitch rated at 15 A; 250 VAC <b>*A2 =</b> Hermetically sealed for corrosive environments <b>*A3 =</b> gold plated contacts for low voltage applications <b>*A5 =</b> for high DC ratings <b>*A6 =</b> elements with adjustable deadband <b>*A7 =</b> 2SPDT switching elements <b>A8 =</b> General purpose microswitch rated at 5 A, 250 VAC; 5 A, 28 VDC <b>*A9 =</b> General purpose microswitch rated at 5 A; 250 VAC  Please refer Page No. 116 for Microswitch options * Please refer note under Range Selection Table	Pressure Port Material / Size  <b>S1 =</b> SS316 / 1/4" BSP(F) <b>S2 =</b> SS316 / 1/4" NPT(F)  Please refer Page No. 110 for Pressure Port options	Diaphragm  <b>0 =</b> Neoprene <b>1 =</b> PTFE

eg. A flameproof switch for gas group IIC, with 1/2" NPT cable entry in aluminium housing as 1SPDT pressure switch, having 20 mbar to 250 mbar pressure range, with 15 Amp. microswitch, SS316 pressure housing with 1/4" BSP port size & neoprene diaphragm shall be specified by

Group 1	Group 2	Group 3	Group 4	Group 5	Group 6	Group 7	Group 8
<input type="checkbox"/>	FE	1	P1	M25	A1	S1	0

Please specify full model number to avoid ambiguity. If only the first two groups are specified while ordering, uncalibrated switches with standard wetted parts and enclosures will be supplied.