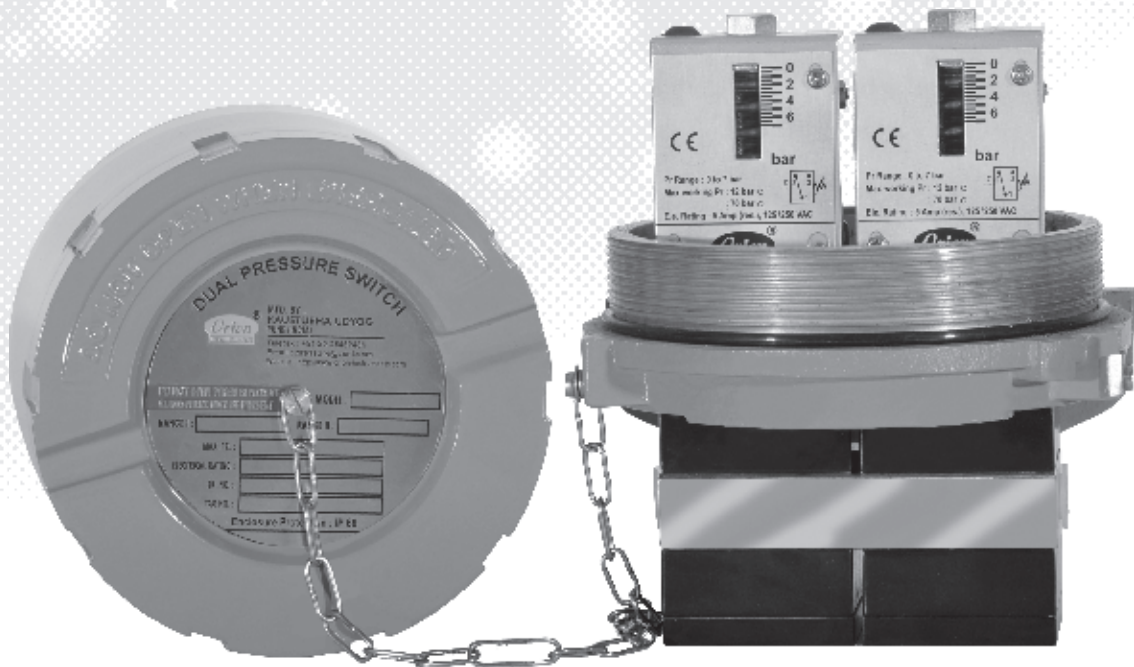




**PRESSURE SWITCHES
PRESSURE DIFFERENCE SWITCHES
VACUUM SWITCHES**
From 1.5 mbar to 600 bar

DS Dual High Range DP Switches

CATALOGUE



Certificate No.: FM72815



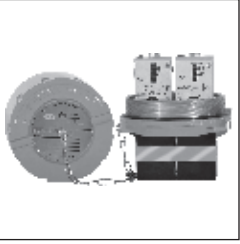
Kaustubha Udyog AN ISO9001:2008 COMPANY

S. No. 36/1/1, Sinhgad Road, Vadgaon Khurd,
Near Lokmat Press, Pune 411 041 INDIA
Tel. : +91-(0) 20-24393577 / 24393877
Telefax: +91-(0) 20-24393577 / 25460486
Email : pressure@vsnl.com

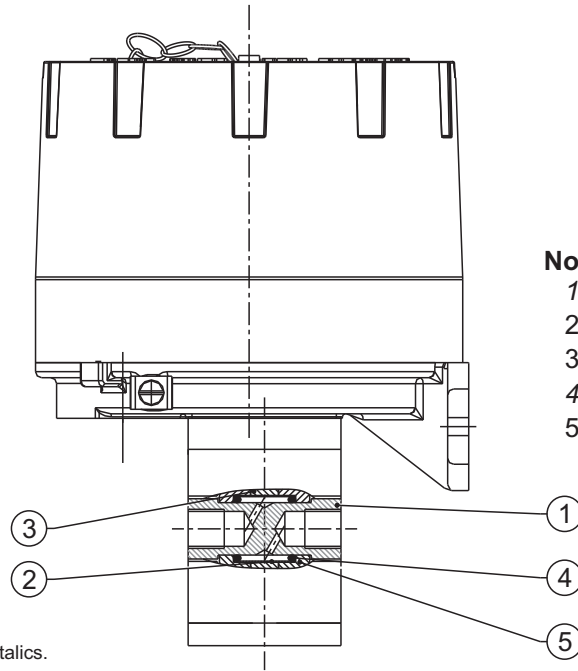
Website : <http://www.orion-instruments.com>

BULLETIN NO. : KA131029

DS DUAL HIGH RANGE DP SWITCHES



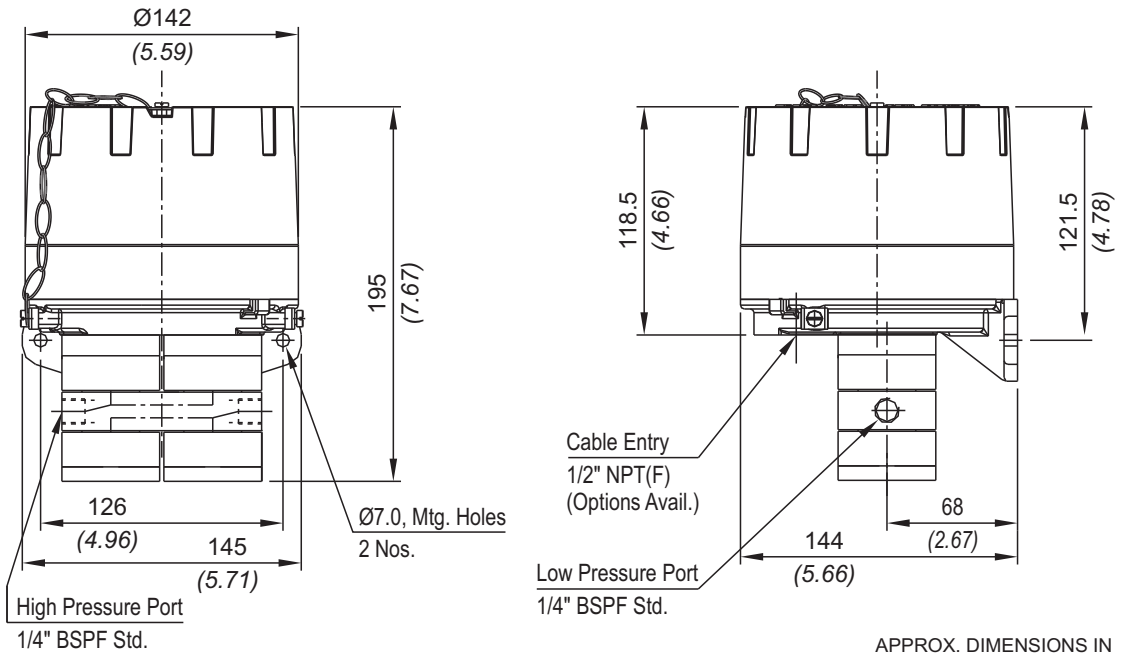
PRESSURE CAPSULE DETAILS



- No. Description**
1. Pressure housing
 2. Diaphragm
 3. Plunger
 4. O-Ring
 5. Disc

Note : *wetted parts* are mentioned in italics.

INSTALLATION DRAWING



RANGE SELECTION TABLE

Range Code	Range bar (psi)	Differential* bar (psi)	Maximum Working Pressure bar (psi)
		Approximate Maximum for "A1" microswitch	
D01	0.1 - 1.0 (1.45 - 14.50)	0.12 (1.74)	70 (1015.26)
D02	0.1 - 1.5 (1.45 - 21.76)	0.20 (2.90)	70 (1015.26)
D03	0.2 - 2.6 (2.90 - 37.71)	0.20 (2.90)	70 (1015.26)
D04	0.2 - 3.6 (2.90 - 52.21)	0.30 (4.35)	70 (1015.26)
D07	0.5 - 7.0 (7.25 - 101.50)	0.40 (5.80)	70 (1015.26)
D10	0.5 - 10.0 (7.25 - 145.04)	0.50 (7.25)	70 (1015.26)
D15	1.0 - 15.0 (14.50 - 217.71)	0.50 (7.25)	70 (1015.26)
D30	5.0 - 25.0 (72.52 - 362.6)	0.80 (11.60)	70 (1015.26)

*Minimum differential increases with setpoint (Graphs available on request)

*** Note :**

Microswitches A2 through A9 can be supplied in some ranges and differentials will vary with microswitch used. Please contact sales office for details. Please check availability of adjustable differential with sales office.

HOW TO ORDER INDUSTRIAL DUAL HIGH RANGE DP SWITCHES

Group 1	Group 2	Group 3	Group 4	Group 5	Group 6	Group 7	Group 8
Non standard allocation	Model	Cable Entry Size	Switch Type	Range Code (values in bar)	Microswitch Type	Pressure Port Material / Size	Diaphragm
<input type="checkbox"/> Reserved for non-standard options not covered in catalogue. Will be given by manufacturer, only after agreement of supply details with customer.	DS = Dual pressure Switch with diecast Aluminium enclosure to IP66 as per IS2147	1 = 1/2" NPT threads 2 = 3/4" NPT threads 3 = M20 X 1.5 cable gland	EF2 = pressure difference switch, fixed differential with scale in bar EF3 = pressure difference switch, fixed differential with scale in psi *EA2 = pressure difference switch, adjustable differential with scale in bar *EA3 = pressure difference switch, adjustable differential with scale in psi <small>*Available only with option A9 in Group 6</small>	D01 = (0.1 - 1.0) D02 (0.1 - 1.5) D03 = (0.2 - 2.6) D04 = (0.2 - 3.6) D07 = (0.5 - 7.0) D10 = (0.5 - 10.0) D15 = (1.0 - 15.0) D30 = (5.0 - 25.0)	A8 = General purpose microswitch rated at 5 A; 250 VAC A7 = 2SPDT microswitches A9 = General purpose microswitch rated @ 5A, 250 VAC	S1 = SS316 / 1/4" BSP(F) S2 = SS316 / 1/4" NPT(F) N1 = Monel / 1/4" BSP(F) N2 = Monel / 1/4" NPT(F)	0 = Neoprene 1 = Teflon 2 = SS316L 4 = Monel

eg. A dual high range pressure difference switch with fixed differential having 0.1 bar to 1 bar pressure range, with 5 Amp. microswitch, SS316 pressure housing with 1/4" BSP port size & neoprene diaphragm shall be specified by

Group 1	Group 2	Group 3	Group 4	Group 5	Group 6	Group 7	Group 8
<input type="checkbox"/>	DS	3	EF2	D01	A8	S1	0

Please specify full model number to avoid ambiguity.